

HOUSE COMMITTEE AMENDMENTS

2026 Regular Session

Amendments proposed by House Committee on House and Governmental Affairs to Reengrossed Senate Bill No. 121 by Senator Morris

AMENDMENT NO. 1

On page 1, delete lines 13 through 17 and delete pages 2 through 5 and on page 6, delete lines 1 through 5 and insert the following:

"(1) District 1 is composed of Precincts 1, 2, 3, 4, 5, 7, 8, 9, 10, 11, 12, 13, 14, 15, 16, 17, 18, 19, 20, 21, 22, 23, 24, 25, 26, 27, 28, 29, 30, 31, 32, 33, 34, 35, 36, 37, 38, 39, 40, 41, 42, 43, 44, 45, 46, 51, 52, 53, 54, 55, 56, 57, 58, 59, 60, 61, 62, 63, 64, 65, 66, 68, 69, 70, 71, 72, 73, 74, 75, 76, 77, 78, 79, 80, 81, 82, 83, 84, 85, 86, 87, 88, 89, 90, 91, 92, 93, 94, 95, 96, 97, 98, 99, 100, 101, 102, 103, 105, 106, 116, 117, 118, 119, 120, 121, 122, 123, 124, 125A, 125B, 126, 127, 128, 129, 130, 132, 134, 136, 138, 192, 198, 199, 203, 246, 247, 248, 1-GI, 1-H, 2-H, 3-H, 4-H, 6-H, 7-H, 8-H, 9-H, 1-K, 2-K, 3-K, 4-K, 5-K, 6-KA, 6-KB, 7-KA, 7-KB, 8-K, 9-K, 10-K, 11-K, 12-K, 13-KA, 14-K, 16-K, 17-K, 19-K, 20-K, 25-K, 27-K, 28-K, 29-K, 34-K, 35-K, and 1-L of Jefferson Parish; Precincts 3-5, 3-6, 4-1, 4-2, 4-3, 4-4, 4-5, 4-6, 7-2, 7-3, 7-4, 8-1, 9-1, 9-2, 10-1, 10-2, 10-3, 10-4, 10-6, 10-8, 10-9, 10-10, 10-11, 10-12, 10-13, 10-14, 10-15, 10-16, 11-1, and 11-2 of Lafourche Parish; Precincts 3-20, 4-7, 4-8, 4-9, 4-11, 4-14, 4-15, 4-17, 4-17A, 4-18, 4-20, 4-21, 4-22, 4-23, 5-12, 5-13, 5-15, 5-16, 5-17, 5-18, 7-41, 7-42, 14-2, 14-3, 14-4, 14-8, 14-9, 14-10, 14-11, 14-12, 14-13A, 14-14, 14-15, 14-16, 14-18A, 14-19, 14-21, 16-1, 16-1A, 16-2, 16-3, 17-1, 17-17, 17-18, 17-18A, 17-19, and 17-20 of Orleans Parish; Plaquemines Parish; St. Bernard Parish; St. Tammany Parish; Precincts 70, 70A, 71, 72, 72A, 73, 74, 122A, 122B, 122C, 124, 137, 137A, 137C, 137D, 145, 147, 149, 149A, and 151 of Tangipahoa Parish; and Precincts 18, 19, 20, 23, 25, 27, 29, 31, 34, 35, 38, 41, 43, 45, 48, 49, 52, 53, 55, 56, 57, 59, 60, 62, 63, 69, 71, 72, 81, 83, 85, 88, 90, 94, 95, 100, and 110 of Terrebonne Parish.

(2) District 2 is composed of Precincts 45, 47, 48, 50, 51, 52, 53, 54, 55, and 57 of Ascension Parish; Precincts 1-1, 1-2, 2-5, 4-3, 5-5, 6-1, 6-2, 6-3, and 7-1 of Assumption Parish; Precincts 1-1, 1-2, 1-3, 1-4, 1-5, 1-6, 1-7, 1-10, 1-11, 1-13, 1-14, 1-15, 1-16, 1-18, 1-19, 1-21, 1-22, 1-23, 1-24, 1-25, 1-26, 1-27, 1-28, 1-29, 1-30, 1-31, 1-32, 1-33, 1-36, 1-38, 1-45, 1-50, 1-51, 1-54, 1-58, 1-61, 1-62, 1-63, 1-67, 1-70, 1-77, 1-78, 1-82, 1-83, 1-84, 1-85, 1-86, 1-91, 1-92, 1-93, 1-94, 1-96, 1-100, 1-101, 1-104, 2-1, 2-2, 2-9, 2-16, 2-20, 2-22, and 2-23 of East Baton Rouge Parish; Precincts 1, 3, 7, 9, 10, 10B, 11, 12, 13, 14, 14A, 15, 16, 17, 18, 19, 20, 21, and 22 of Iberville Parish; Precincts 104, 108, 115, 131, 133, 150A, 150B, 151, 152, 153, 154, 155, 156, 157A, 170, 171, 172, 173, 174, 175, 176, 177, 178, 179A, 179B, 180, 181, 182, 183, 184, 185A, 185B, 187, 188, 189, 190, 191, 193A, 193B, 194A, 194B, 195, 196, 197A, 197B, 200, 201, 202, 204, 205, 210, 211, 212, 213A, 213B, 213C, 214A, 214B, 215, 216A, 216B, 217, 225, 226, 227, 228, 229, 230, 231, 232A, 232B, 234, 235, 236, 237, 238A, 238B, 1-G, 2-G, 3-G, 4-G, 5-G, 6-G, 7-G, 8-G, 9-G, 10-G, 11-G, 12-G, 13-G, 13-KB, 15-K, 21-K, 22-K, 23-K, 24-K, 26-K, 30-K, 31-K, 33-K, 1-W, 3-W, 4-W, 5-W, 6-W, and 7-W of Jefferson Parish; Precincts 1-1, 1-2, 1-5, 1-6, 2-1, 2-2, 2-4, 2-6, 2-7, 3-1, 3-8, 3-9, 3-12, 3-14, 3-15, 3-18, 3-19, 4-2, 4-3, 4-6, 5-1, 5-2, 5-3, 5-5, 5-7, 5-8, 5-9, 5-10, 5-11, 6-1, 6-2, 6-4, 6-6, 6-7, 6-8, 6-9, 7-1, 7-2, 7-4, 7-5, 7-6, 7-7, 7-8, 7-9A, 7-10, 7-11, 7-12, 7-13, 7-14, 7-15, 7-16, 7-17, 7-18, 7-19, 7-20, 7-21, 7-23, 7-24, 7-25, 7-25A, 7-26, 7-27, 7-27B, 7-28, 7-28A, 7-29, 7-30, 7-32, 7-33, 7-35, 7-37, 7-37A, 7-40, 8-1, 8-2, 8-4, 8-6, 8-7, 8-8, 8-9, 8-12, 8-13, 8-14, 8-15, 8-19, 8-20, 8-21, 8-22, 8-23, 8-24, 8-25, 8-26, 8-27, 8-28, 8-30, 9-1, 9-3, 9-4, 9-5, 9-6, 9-7, 9-8, 9-9, 9-10, 9-11, 9-12, 9-13, 9-14, 9-15, 9-16, 9-17, 9-19, 9-21, 9-23, 9-25, 9-26, 9-28, 9-28C, 9-29, 9-30, 9-30A, 9-31, 9-31A, 9-31B, 9-31D, 9-32, 9-33, 9-34A, 9-35, 9-35A, 9-36, 9-36B, 9-37, 9-38, 9-38A, 9-39, 9-39B, 9-40, 9-40A, 9-40C, 9-41, 9-41A, 9-41B, 9-41C, 9-41D, 9-42,

9-42C, 9-43A, 9-43B, 9-43C, 9-43E, 9-43F, 9-43G, 9-43H, 9-43I, 9-43J, 9-43K, 9-43L, 9-43M, 9-43N, 9-44, 9-44A, 9-44B, 9-44D, 9-44E, 9-44F, 9-44G, 9-44I, 9-44J, 9-44L, 9-44M, 9-44N, 9-44O, 9-44P, 9-44Q, 9-45, 9-45A, 10-3, 10-6, 10-7, 10-8, 10-9, 10-11, 10-12, 10-13, 10-14, 11-2, 11-3, 11-4, 11-5, 11-8, 11-9, 11-10, 11-11, 11-12, 11-13, 11-14, 11-17, 12-1, 12-2, 12-3, 12-4, 12-5, 12-6, 12-7, 12-9, 12-10, 12-11, 12-12, 12-13, 12-14, 12-16, 12-17, 12-19, 13-1, 13-2, 13-3, 13-4, 13-5, 13-6, 13-7, 13-8, 13-9, 13-10, 13-11, 13-12, 13-13, 13-14, 13-15, 13-16, 14-1, 14-5, 14-6, 14-7, 14-17, 14-20, 14-23, 14-24A, 14-25, 14-26, 15-1, 15-2, 15-3, 15-5, 15-6, 15-8, 15-9, 15-10, 15-11, 15-12, 15-12A, 15-13, 15-13A, 15-13B, 15-14, 15-14A, 15-14B, 15-14C, 15-14D, 15-14E, 15-14F, 15-14G, 15-15, 15-15A, 15-15B, 15-16, 15-17, 15-17A, 15-17B, 15-18, 15-18A, 15-18B, 15-18C, 15-18D, 15-18E, 15-18F, 15-19, 15-19A, 15-19B, 15-19C, 16-4, 16-5, 16-6, 16-7, 16-8, 16-9, 17-2, 17-3, 17-4, 17-5, 17-6, 17-7, 17-8, 17-9, 17-10, 17-11, 17-12, 17-13, 17-13A, 17-14, 17-15, and 17-16 of Orleans Parish; Precincts 1-1, 1-2, 1-3, 1-4, 1-5, 2-1, 2-3, 2-4, 2-5, 4-1, 4-2, 4-3, 4-4, 4-5, 5-1, 5-3, 5-4, 6-3, 6-6, 7-1, 7-2, 7-3, 7-4, and 7-5 of St. Charles Parish; St. James Parish; Precincts 1-1, 1-2, 1-3, 1-4, 1-5, 2-1, 2-2, 2-3, 2-4, 2-5, 3-1, 3-2, 3-3, 3-4, 3-7, 4-1, 4-2, 4-3, 5-1, 5-2, 5-3, 6-1, 6-2, 6-3, 6-4, 7-1, and 7-4 of St. John the Baptist Parish; and Precincts 1A, 1B, 1C, 1D, 1E, 6, 7A, 7B, 8, 10, 13A, 13B, 14A, 14B, and 15 of West Baton Rouge Parish.

(3) District 3 is composed of Precincts 1-1, 1-2, 1-3, 1-4, 1-5, 1-6, 1-7, 1-8, 2-1, 2-2, 2-3, 2-4, 2-5, 3-1, 3-2, 3-3, 3-4, 3-5, 3-7, 4-1, 4-2, 4-3, 4-4, 4-5, 4-6, 5-1, 5-2, 5-3, 5-4, 5-5, 6-1, 6-2, 6-3, 6-4, 6-5, 6-6, 6-7, 6-8, 6-10, 6-12, 6-13, 6-14, 6-15, 6-16, and 7-4 of Acadia Parish; Calcasieu Parish; Cameron Parish; Iberia Parish; Jefferson Davis Parish; Precincts 4, 5, 7, 8, 9, 10, 11, 12, 13, 14, 15, 16, 17, 18, 19, 20, 21, 22, 23, 24, 25, 26, 27, 28, 29, 30, 31, 32, 33, 34, 35, 36, 37, 38, 39, 40, 41, 42, 43, 44, 45, 46, 47, 48, 49, 51, 52, 53, 54, 55, 56, 57, 58, 59, 60, 63, 64, 65, 66, 67, 68, 69, 70, 71, 72, 73, 74, 75, 76, 77, 78, 79, 80, 81, 82, 83, 84, 85, 86, 87, 88, 89, 90, 91, 92, 93, 94, 95, 96, 97, 98, 99, 100, 101, 102, 103, 104, 105, 106, 107, 108, 109, 110, 111, 112, 113, 114, 115, 116, 117, 118, 119, 120, 121, 124, 125, 126, 127, 128, 130, 133, 134, 135, and 136 of Lafayette Parish; Precincts 51 of St. Landry Parish; Precincts 3, 4, 5, 6, 7, 9, 10, 11, 12, 13, 14, 18, 19, 24, and 25 of St. Martin Parish; St. Mary Parish; Precincts 1, 2, 5, 7, 8, 10, 11, 12, 14, 15, 16, 17, 28, 33, 37, 39, 42, 51, 64, 67, 68, 73, 76, 84, and 87 of Terrebonne Parish; and Vermilion Parish.

(4) District 4 is composed of Precincts 7-2 of Acadia Parish; Allen Parish; Beauregard Parish; Bienville Parish; Bossier Parish; Caddo Parish; Claiborne Parish; De Soto Parish; Evangeline Parish; Jackson Parish; Lincoln Parish; Morehouse Parish; Natchitoches Parish; Red River Parish; Sabine Parish; Union Parish; Vernon Parish; and Webster Parish.

(5) District 5 is composed of Precincts 7-3 of Acadia Parish; Avoyelles Parish; Caldwell Parish; Catahoula Parish; Concordia Parish; East Carroll Parish; East Feliciana Parish; Franklin Parish; Grant Parish; La Salle Parish; Precincts 6, 6A, 6B, 8B, 9, 10, 11, 11A, 12, and 30 of Livingston Parish; Madison Parish; Ouachita Parish; Precincts 1, 2, 4, and 6 of Pointe Coupee Parish; Rapides Parish; Richland Parish; St. Helena Parish; Precincts 1, 1A, 1B, 1C, 1D, 2, 2A, 2B, 2C, 3, 4, 4A, 4B, 5, 6, 7, 7A, 8, 9, 9A, 10, 10A, 11, 11B, 12, 13, 13A, 14, 14A, 14B, 15, 16, 16A, 17, 18, 18A, 18B, 19, 19A, 20, 20B, 21, 21A, 22, 22B, 23, 23A, 24, 24B, 25, 26, 26A, 27, 28, 29, 29A, 30, 30A, 30B, 31, 32, 32A, 33, 33A, 34, 34A, 35, 36, 37, 37A, 38, 39, 39A, 40, 41, 41A, 42, 43, 44, 44A, 44B, 45, 46, 47, 48, 49, 50, 50A, 51A, and 52 of St. Landry Parish; Precincts 2, 6, 11, 15, 16, 17, 28, 33, 40A, 41, 42, 43, 44, 45A, 45B, 46, 47, 49, 101, 102, 104, 106, 106A, 107, 108, 109, 110, 111A, 112, 114, 115B, 116, 117, 118, 118A, 119, 120, 120A, 120B, 121, 121A, 123, 125, 127, 129A, 133, 133A, 137B, 139, 141, 141A, 143, and 143A of Tangipahoa Parish; Tensas Parish; Washington Parish; West Carroll Parish; West Feliciana Parish; and Winn Parish.

(6) District 6 is composed of Precincts 1, 2, 3, 4, 5, 6, 7, 8, 9, 10, 11, 12, 13, 14, 15, 16, 17, 18, 19, 20, 21, 22, 23, 24, 25, 26, 27, 28, 30, 31, 32, 33, 34, 35, 36, 37, 38, 39, 40, 41, 42, 43, 44, 58, 61, 62, 63, 64, 65, 66, 68, 69, 71, 72, 73, 76, 77, and 78 of Ascension Parish; Precincts 1-3, 2-1, 2-3, 2-4, 3-1, 3-2, 4-1, 4-4, 5-1,

1 5-2, 5-3, 7-2, 7-3, 8-1, and 9-1 of Assumption Parish; Precincts 1-8, 1-9, 1-12,
 2 1-20, 1-34, 1-35, 1-37, 1-39, 1-40, 1-41, 1-42, 1-43, 1-44, 1-46, 1-47, 1-48, 1-49,
 3 1-52, 1-53, 1-55, 1-56, 1-57, 1-59, 1-60, 1-64, 1-65, 1-66, 1-69, 1-71, 1-72, 1-73,
 4 1-74, 1-75, 1-76, 1-79, 1-80, 1-81, 1-87, 1-88, 1-89, 1-90, 1-95, 1-97, 1-98, 1-99,
 5 1-102, 1-103, 1-105, 1-106, 1-107, 2-3, 2-4, 2-5, 2-6, 2-7, 2-8, 2-10, 2-11, 2-12, 2-13,
 6 2-14, 2-15, 2-17, 2-18, 2-19, 2-21, 2-24, 2-25, 2-26, 2-27, 2-28, 2-29, 2-30, 2-31,
 7 2-32, 2-33, 2-34, 2-35, 2-36, 2-37, 2-38, 3-1, 3-2, 3-3, 3-4, 3-5, 3-6, 3-7, 3-8, 3-9,
 8 3-10, 3-11, 3-12, 3-13, 3-14, 3-15, 3-16, 3-17, 3-18, 3-19, 3-20, 3-21, 3-22, 3-23,
 9 3-24, 3-25, 3-26, 3-27, 3-28, 3-29, 3-30, 3-31, 3-32, 3-33, 3-34, 3-35, 3-36, 3-37,
 10 3-38, 3-39, 3-40, 3-41, 3-42, 3-43, 3-44, 3-45, 3-46, 3-47, 3-48, 3-49, 3-50, 3-51,
 11 3-52, 3-53, 3-54, 3-55, 3-56, 3-57, 3-58, 3-59, 3-60, 3-61, 3-62, 3-63, 3-64, 3-65,
 12 3-66, 3-67, 3-68, 3-69, 3-70, 3-71, 3-72, 3-73, 3-74, 3-75, and 3-76 of East Baton
 13 Rouge Parish; Precincts 4, 5, 6, 15A, 24, 25, 26, 27, 28, 29, 31, and 32 of Iberville
 14 Parish; Precincts 1, 2, 3, 6, 50, 122, and 123 of Lafayette Parish; Precincts 1-1,
 15 1-2, 1-3, 1-4, 1-5, 1-6, 2-1, 2-1A, 2-2, 2-3, 2-5, 2-6, 2-7, 2-8, 2-9, 2-10, 2-11, 2-12,
 16 2-13, 2-14, 2-15, 2-16, 3-1, 3-2, 3-3, 3-4, 3-7, 5-1, 5-1A, 5-2, 5-3, 6-1, 6-2, 6-3, 6-4,
 17 6-5, 7-1, 11-3, 11-4, and 11-5 of Lafourche Parish; Precincts 1, 1A, 1B, 1C, 1D,
 18 2, 2A, 3, 3A, 3B, 4, 4A, 4B, 5, 5A, 5B, 5D, 7, 7A, 7B, 7C, 7D, 8A, 13A, 13B, 14,
 19 15, 16, 17, 18, 18A, 19, 19A, 20, 21, 21A, 21B, 22, 23, 23A, 23B, 23C, 24, 24B,
 20 24C, 24D, 25, 26, 26A, 26B, 26C, 27, 28, 29, 31, 32, 33, 34, 35, 35A, 36, 36A, 38,
 21 39, 39A, 39B, 40, 40A, 41, and 43 of Livingston Parish; Precincts 7, 7A, 8, 8A,
 22 9, 9A, 10, 11, 12, 13, 13B, 14, 15, 16, 16B, 17, 17A, 18, 19, and 20 of Pointe
 23 Coupee Parish; Precincts 1-6, 2-6, 3-1, 3-2, 3-3, 5-5, 6-1, 6-2, and 6-4 of St.
 24 Charles Parish; Precincts 1-6, 1-7, 4-4, 4-5, 5-4, 5-5, 6-5, 7-2, and 7-3 of St. John
 25 the Baptist Parish; Precincts 1, 2, 8, 15, 16, 17, 20, 21, 22, 23, 26, 27, 28, 29, 30,
 26 31, 32, 33, 34, 35, 36, 37, 38, 39, 40, 41, 42, and 43 of St. Martin Parish; and
 27 Precincts 2A, 2B, 3, 4A, 4B, 5, 9, 16, 17, 18, 19, 20, 21, and 22 of West Baton
 28 Rouge Parish."

Plan Statistics

Plan: HCA SB121-5662

<u>Districts:</u>	<u># of Members</u>	<u>Actual Population</u>	<u>Ideal Population</u>	<u>Absolute Deviation</u>	<u>Relative Deviation</u>
District 1	1	776,252	776,292	-40	-0.005%
District 2	1	776,337	776,292	45	0.006%
District 3	1	776,280	776,292	-12	-0.002%
District 4	1	776,341	776,292	49	0.006%
District 5	1	776,253	776,292	-39	-0.005%
District 6	1	776,294	776,292	2	0.000%
Grand Total:	6	4,657,757	4,657,752		

Ideal Population Per Member:	776292	
Number of Districts for Plan Type:	6	
Range of District Populations:	776,252 to 776,341	
Absolute Mean Deviation:	15	
Absolute Range:	-40 to 49	
Absolute Overall Range:	89	
Relative Mean Deviation:	0.00%	
Relative Range:	-0.01% to 0.01%	
Relative Overall Range:	0.02%	

<i>Ideal - Actual:</i>	-5
<i>Remainder:</i>	5
<i>Unassigned Population:</i>	0

District Summary

Plan: HCA SB121-5662

	Total Population	VAP Total	Reg Total Dec 2025	Reg Dem Total Dec 2025	Reg Rep Total Dec 2025	Reg Other Total Dec 2025
District 1	776,252	601,847	438,985	107,108	197,758	134,119
	100.000%	100.000%	72.940%	24.399%	45.049%	30.552%
District 2	776,337	601,109	413,838	253,804	54,048	105,986
	100.000%	100.000%	68.846%	61.329%	13.060%	25.611%
District 3	776,280	586,578	416,634	121,237	182,733	112,664
	100.000%	100.000%	71.028%	29.099%	43.859%	27.041%
District 4	776,341	594,675	398,740	135,132	165,611	97,997
	100.000%	100.000%	67.052%	33.890%	41.534%	24.577%
District 5	776,253	593,154	404,796	139,807	169,480	95,509
	100.000%	100.000%	68.245%	34.538%	41.868%	23.594%
District 6	776,294	593,185	437,280	133,995	184,443	118,842
	100.000%	100.000%	73.717%	30.643%	42.180%	27.178%
Grand Total	4,657,757	3,570,548	2,510,273	891,083	954,073	665,117
	100.000%	100.000%	70.305%	35.497%	38.007%	26.496%

District Parish Summary

Plan: HCA SB121-5662

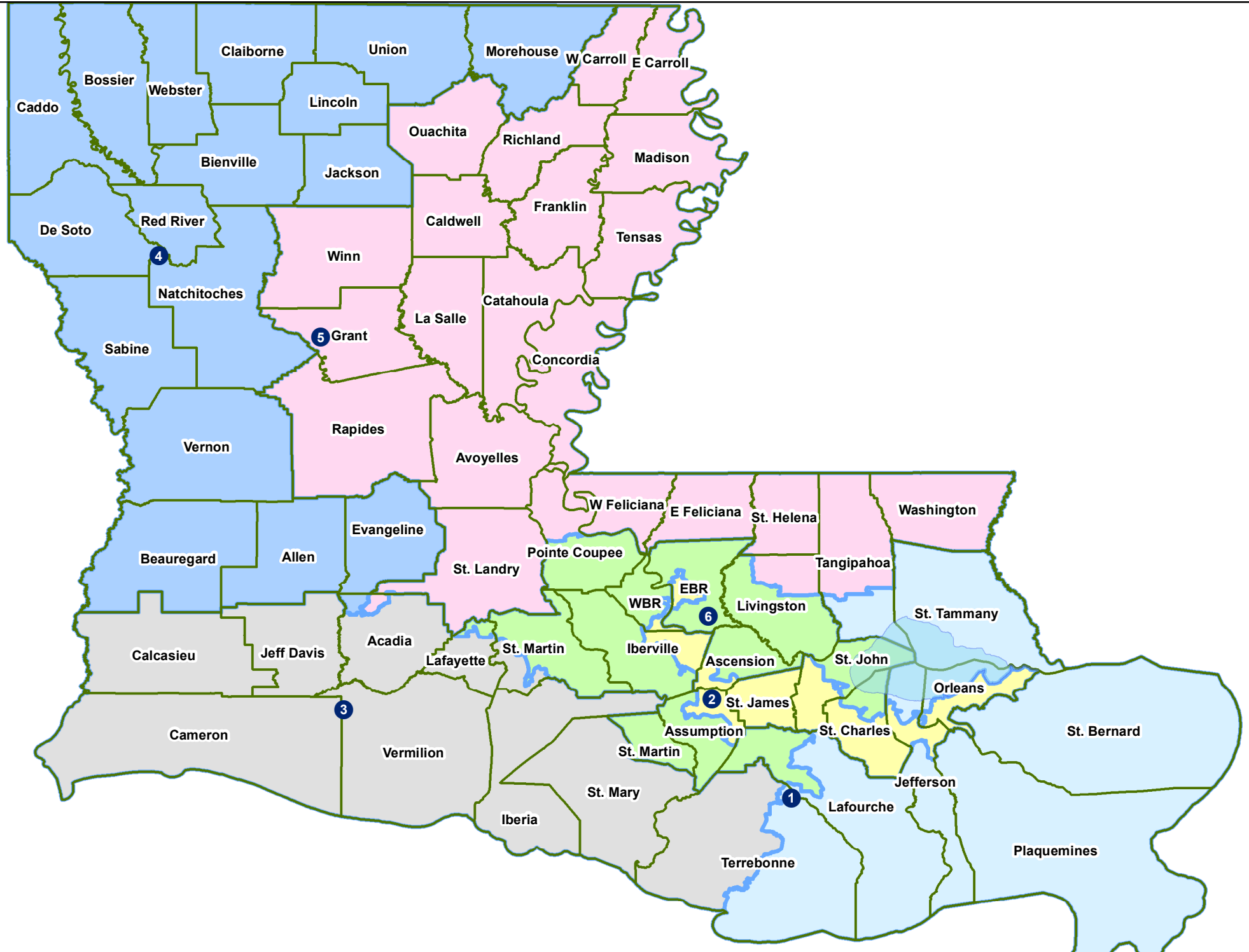
	Total Population	VAP Total	Reg Total Dec 2025	Reg Dem Total Dec 2025	Reg Rep Total Dec 2025	Reg Other Total Dec 2025
District 1						
*Jefferson	245,682	196,528	133,984	33,174	59,052	41,758
*Lafourche	44,458	33,799	22,315	5,447	10,654	6,214
*Orleans	50,038	41,407	29,329	10,958	8,637	9,734
Plaquemines	23,515	17,334	12,130	3,924	4,971	3,235
St. Bernard	43,764	31,775	22,206	7,912	6,732	7,562
St. Tammany	264,570	202,228	168,850	34,289	83,147	51,414
*Tangipahoa	39,081	29,691	21,750	4,175	11,357	6,218
*Terrebonne	65,144	49,085	28,421	7,229	13,208	7,984
District 1	776,252	601,847	438,985	107,108	197,758	134,119
	100.000%	100.000%	72.940%	24.399%	45.049%	30.552%
District 2						
*Ascension	9,737	7,283	5,100	3,426	818	856
*Assumption	6,927	5,421	4,237	2,489	1,037	711
*East Baton Rouge	107,412	81,762	50,324	36,318	2,390	11,616
*Iberville	21,489	16,969	11,853	6,811	2,593	2,449
*Jefferson	195,099	148,126	92,835	46,648	18,490	27,697
*Orleans	333,959	264,789	188,230	126,881	12,630	48,719
*St. Charles	35,062	26,383	20,904	7,411	8,017	5,476
St. James	20,192	15,505	13,459	7,633	3,537	2,289
*St. John the Baptist	32,678	24,826	19,043	12,146	2,592	4,305
*West Baton Rouge	13,782	10,045	7,853	4,041	1,944	1,868
District 2	776,337	601,109	413,838	253,804	54,048	105,986
	100.000%	100.000%	68.846%	61.329%	13.060%	25.611%
District 3						
*Acadia	54,857	40,967	31,858	9,187	15,300	7,371
Calcasieu	216,785	163,166	103,342	30,390	44,395	28,557
Cameron	5,617	4,358	3,924	844	2,118	962
Iberia	69,929	52,791	36,944	12,313	15,184	9,447
Jefferson Davis	32,250	24,039	18,329	4,957	8,478	4,894
*Lafayette	226,232	172,542	129,543	35,764	56,959	36,820
*St. Landry	1,494	1,054	648	409	65	174
*St. Martin	17,915	13,708	10,558	4,402	3,817	2,339
St. Mary	49,406	37,521	26,695	9,267	9,994	7,434
*Terrebonne	44,436	33,420	22,131	5,096	10,872	6,163
Vermilion	57,359	43,012	32,662	8,608	15,551	8,503
District 3	776,280	586,578	416,634	121,237	182,733	112,664
	100.000%	100.000%	71.028%	29.099%	43.859%	27.041%
District 4						
*Acadia	965	692	625	126	395	104
Allen	22,750	17,510	10,797	3,362	5,053	2,382
Beauregard	36,549	27,489	21,046	3,672	11,362	6,012
Bienville	12,981	10,073	7,942	3,498	2,889	1,555
Bossier	128,746	95,876	64,006	14,484	31,775	17,747
Caddo	237,848	182,407	119,564	52,437	37,457	29,670
Claiborne	14,170	11,507	7,439	2,884	2,826	1,729
De Soto	26,812	20,440	17,070	5,932	7,395	3,743
Evangeline	32,350	24,408	18,176	7,093	7,463	3,620
Jackson	15,031	11,783	8,696	2,713	4,187	1,796
Lincoln	48,396	38,655	21,272	6,783	9,161	5,328
Morehouse	25,629	20,062	13,316	5,563	4,880	2,873
Natchitoches	37,515	29,349	19,037	7,518	6,812	4,707
Red River	7,620	5,714	4,877	2,218	1,747	912
Sabine	22,155	17,064	12,460	3,010	6,599	2,851
Union	21,107	16,632	12,695	3,322	6,653	2,720
Vernon	48,750	36,261	20,095	3,985	10,497	5,613
Webster	36,967	28,753	19,627	6,532	8,460	4,635
District 4	776,341	594,675	398,740	135,132	165,611	97,997
	100.000%	100.000%	67.052%	33.890%	41.534%	24.577%
District 5						
*Acadia	1,754	1,284	1,100	168	706	226
Avoyelles	39,693	30,578	19,578	7,487	7,622	4,469
Caldwell	9,645	7,478	5,381	1,214	2,944	1,223
Catahoula	8,906	6,951	5,626	1,981	2,445	1,200
Concordia	18,687	14,217	9,841	4,059	3,753	2,029
East Carroll	7,459	5,901	3,106	1,880	682	544
East Feliciana	19,539	16,183	12,351	4,876	4,703	2,772
Franklin	19,774	15,028	11,061	3,534	5,395	2,132
Grant	22,169	17,527	11,346	2,136	6,269	2,941
La Salle	14,791	11,563	7,863	1,383	4,887	1,593

District Parish Summary

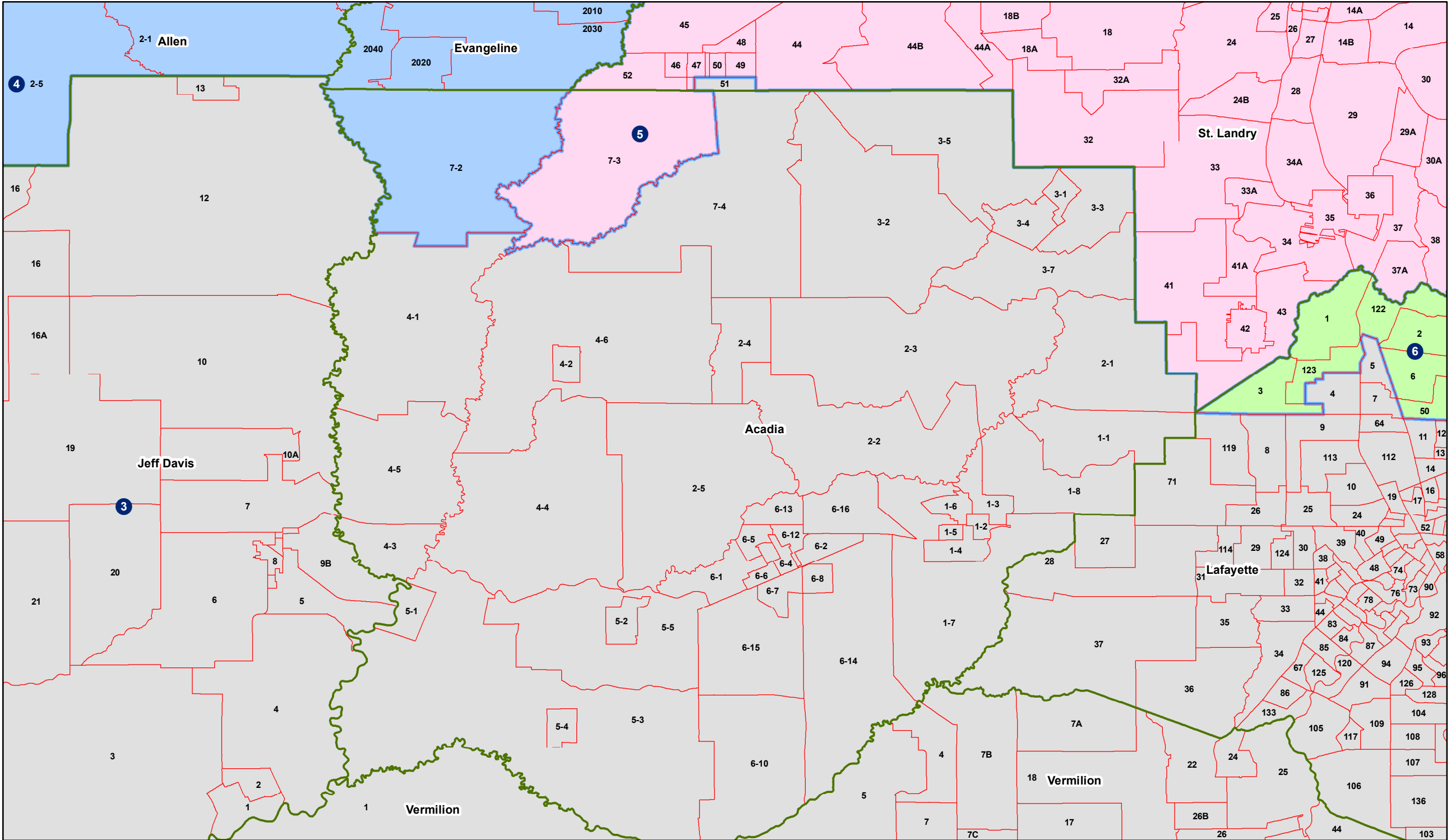
Plan: HCA SB121-5662

	Total Population	VAP Total	Reg Total Dec 2025	Reg Dem Total Dec 2025	Reg Rep Total Dec 2025	Reg Other Total Dec 2025
District 5						
*Livingston	16,491	12,284	9,241	1,704	5,029	2,508
Madison	10,017	7,435	5,394	2,855	1,377	1,162
Ouachita	160,368	120,200	80,532	26,315	35,088	19,129
*Pointe Coupee	2,426	1,923	1,631	783	520	328
Rapides	130,023	98,792	66,219	20,448	28,894	16,877
Richland	20,043	15,383	11,325	3,695	5,132	2,498
St. Helena	10,920	8,463	7,499	4,179	1,984	1,336
*St. Landry	81,046	60,757	48,733	21,744	15,853	11,136
*Tangipahoa	94,076	71,800	40,191	13,724	16,152	10,315
Tensas	4,147	3,235	3,024	1,719	828	477
Washington	45,463	34,951	24,047	8,242	9,837	5,968
West Carroll	9,751	7,532	5,144	1,069	2,963	1,112
West Feliciana	15,310	12,783	7,463	2,468	3,265	1,730
Winn	13,755	10,906	7,100	2,144	3,152	1,804
District 5	776,253	593,154	404,796	139,807	169,480	95,509
	100.000%	100.000%	68.245%	34.538%	41.868%	23.594%
District 6						
*Ascension	116,763	84,674	70,009	18,761	31,386	19,862
*Assumption	14,112	11,195	7,950	3,025	3,180	1,745
*East Baton Rouge	349,369	273,850	186,924	67,945	67,906	51,073
*Iberville	8,752	7,117	5,691	2,557	1,921	1,213
*Lafayette	15,521	11,333	9,079	2,548	4,040	2,491
*Lafourche	53,099	40,820	30,023	8,043	13,763	8,217
*Livingston	125,791	92,857	71,259	11,836	39,419	20,004
*Pointe Coupee	18,332	14,327	11,570	5,075	3,906	2,589
*St. Charles	17,487	13,158	10,777	2,617	5,107	3,053
*St. John the Baptist	9,799	7,677	5,656	2,419	1,689	1,548
*St. Martin	33,852	25,696	20,499	6,360	9,063	5,076
*West Baton Rouge	13,417	10,481	7,843	2,809	3,063	1,971
District 6	776,294	593,185	437,280	133,995	184,443	118,842
	100.000%	100.000%	73.717%	30.643%	42.180%	27.178%
Grand Total	4,657,757	3,570,548	2,510,273	891,083	954,073	665,117
	100.000%	100.000%	70.305%	35.497%	38.007%	26.496%

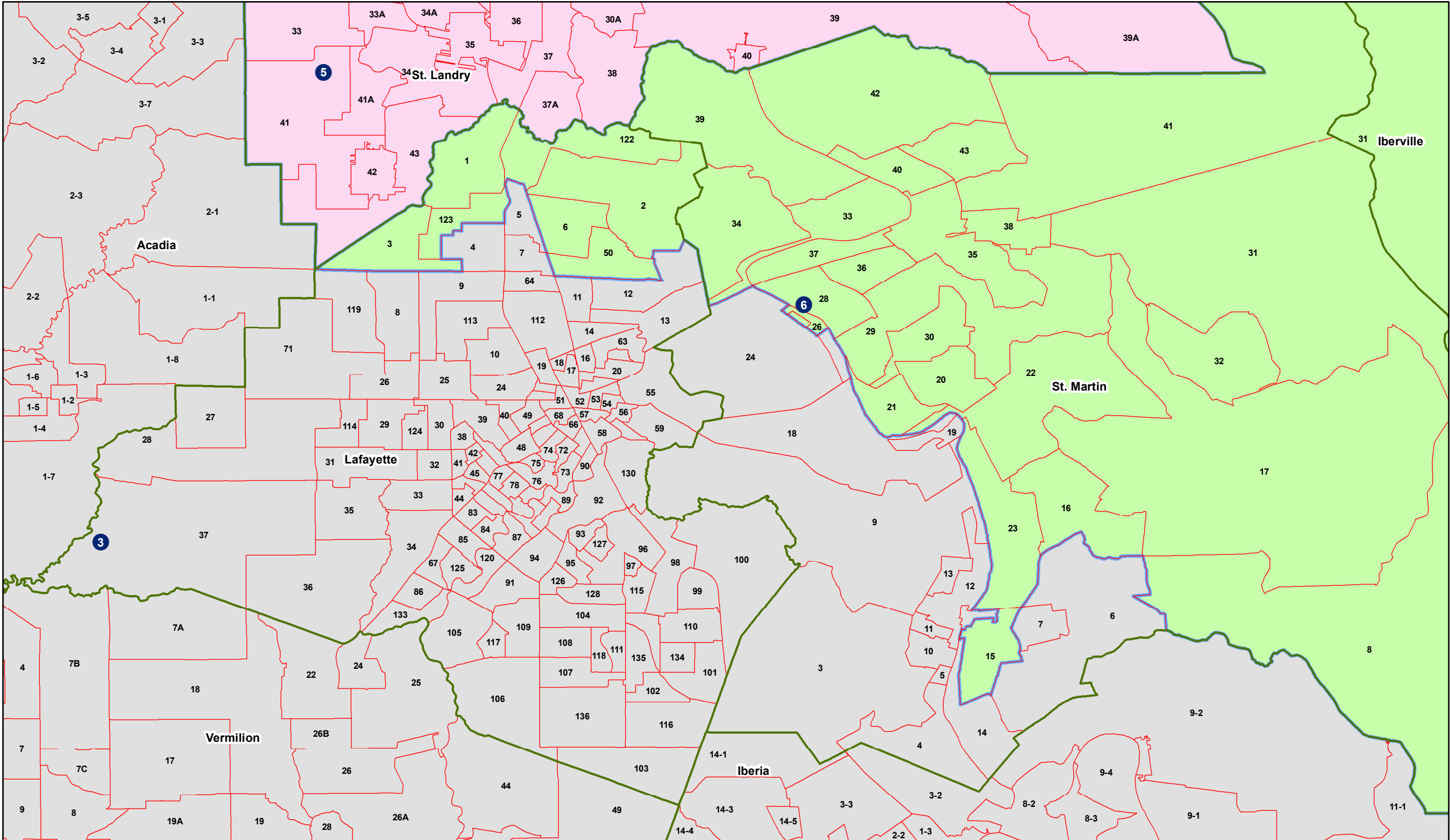
Congress - HCA SB121 - 5662



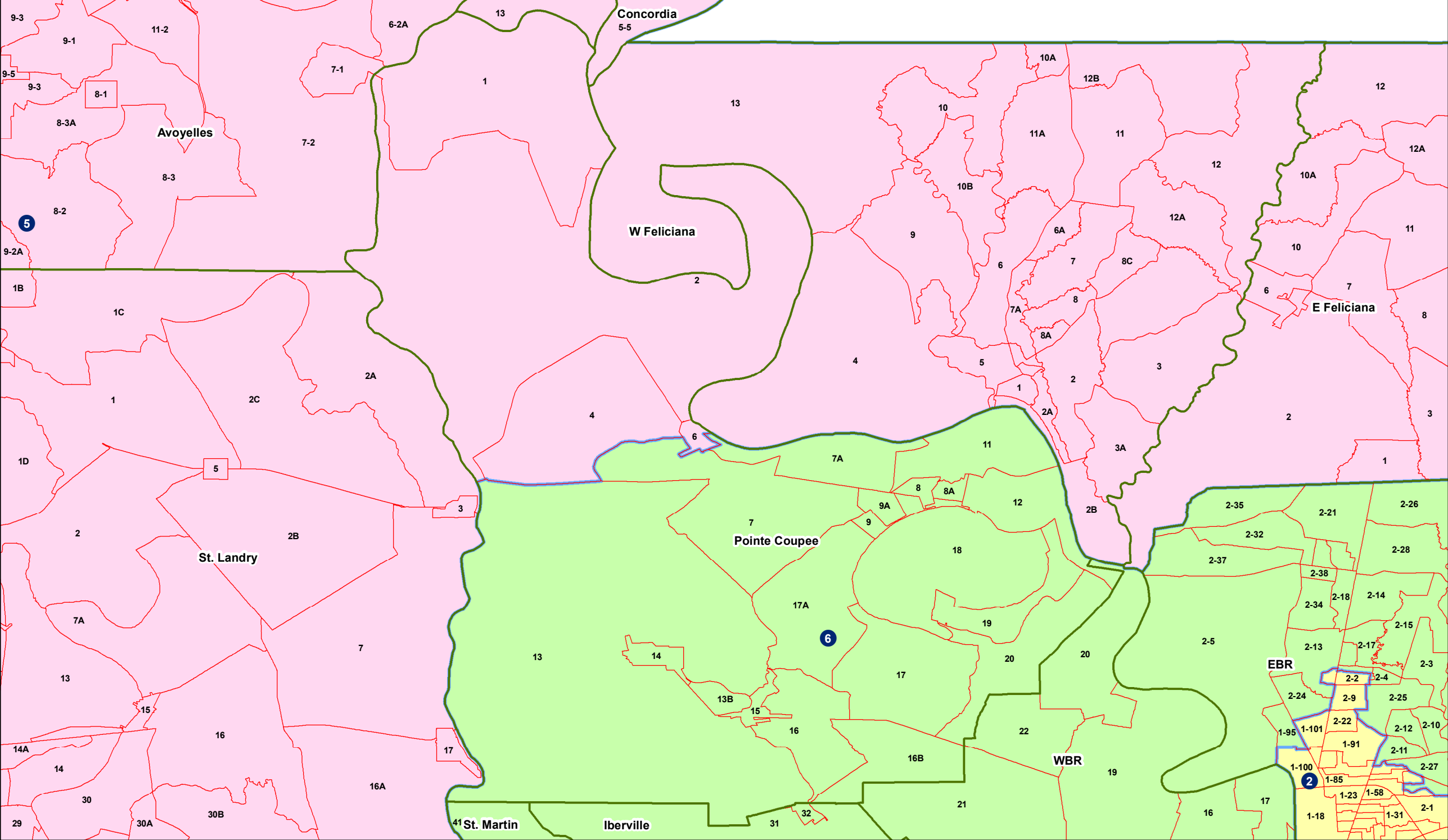
Congress - Acadia - HCA SB121 - 5662



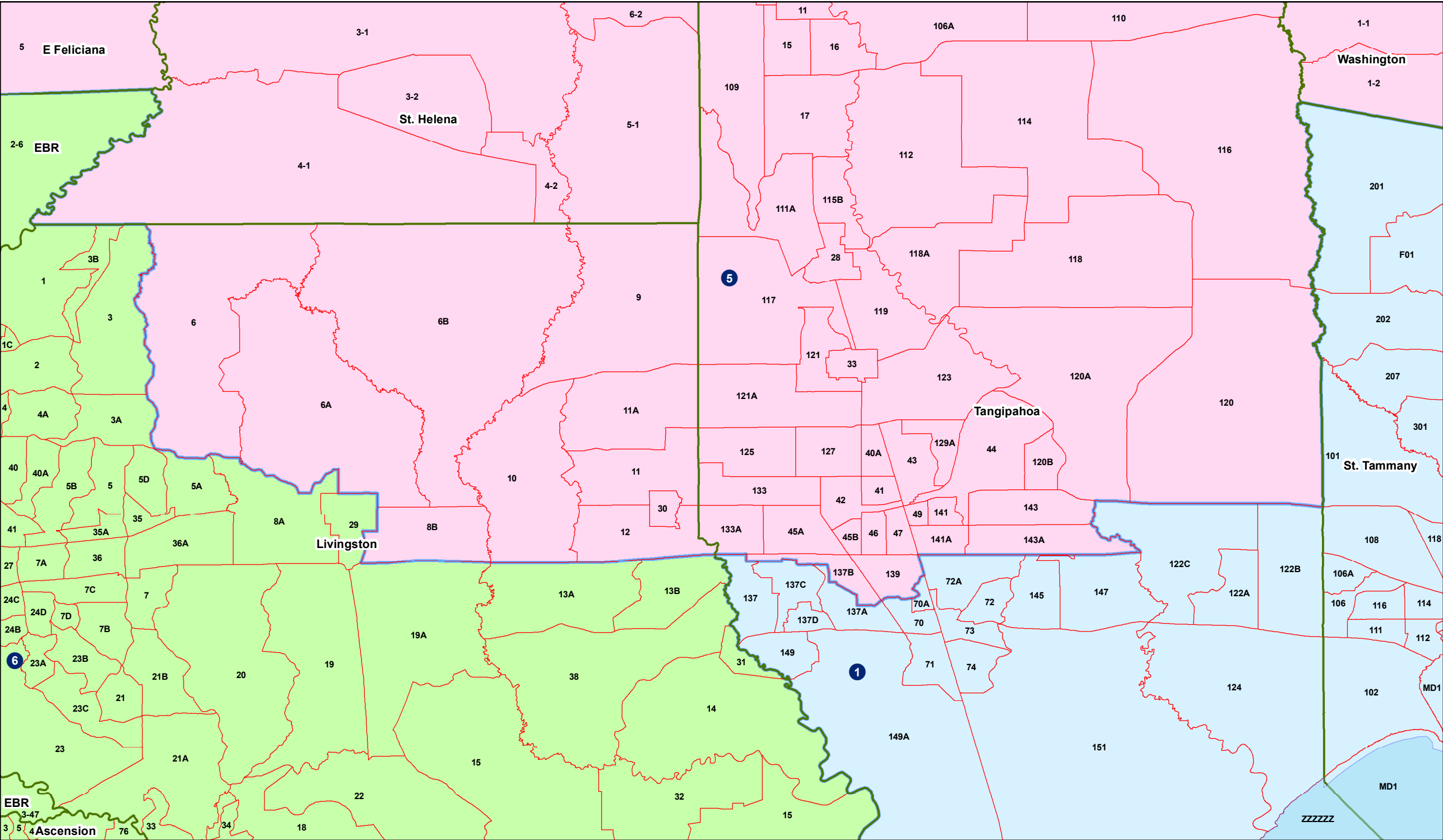
Congress - Lafayette St. Martin - HCA SB121 - 5662



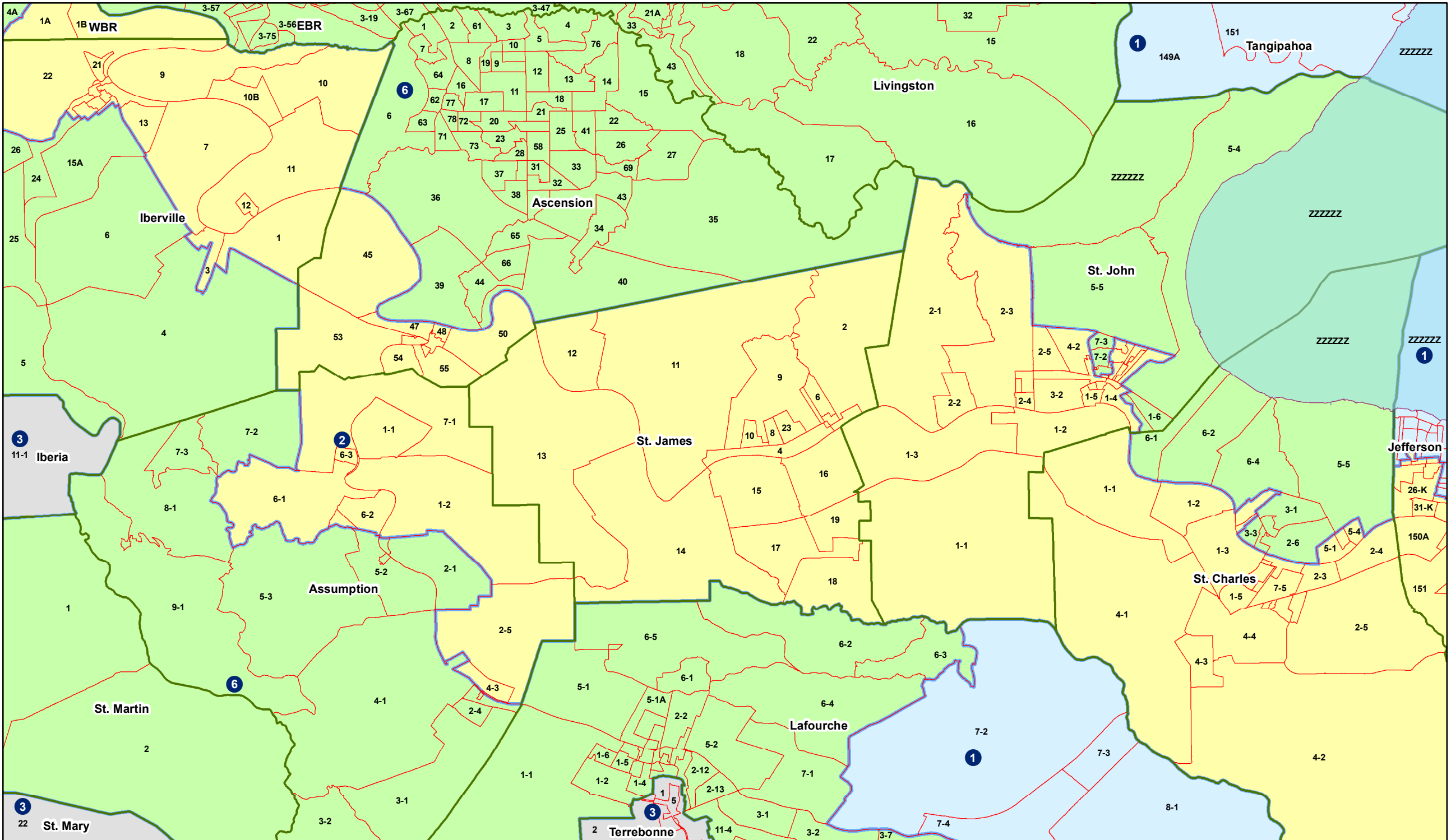
Congress - Pointe Coupee - HCA SB121 - 5662



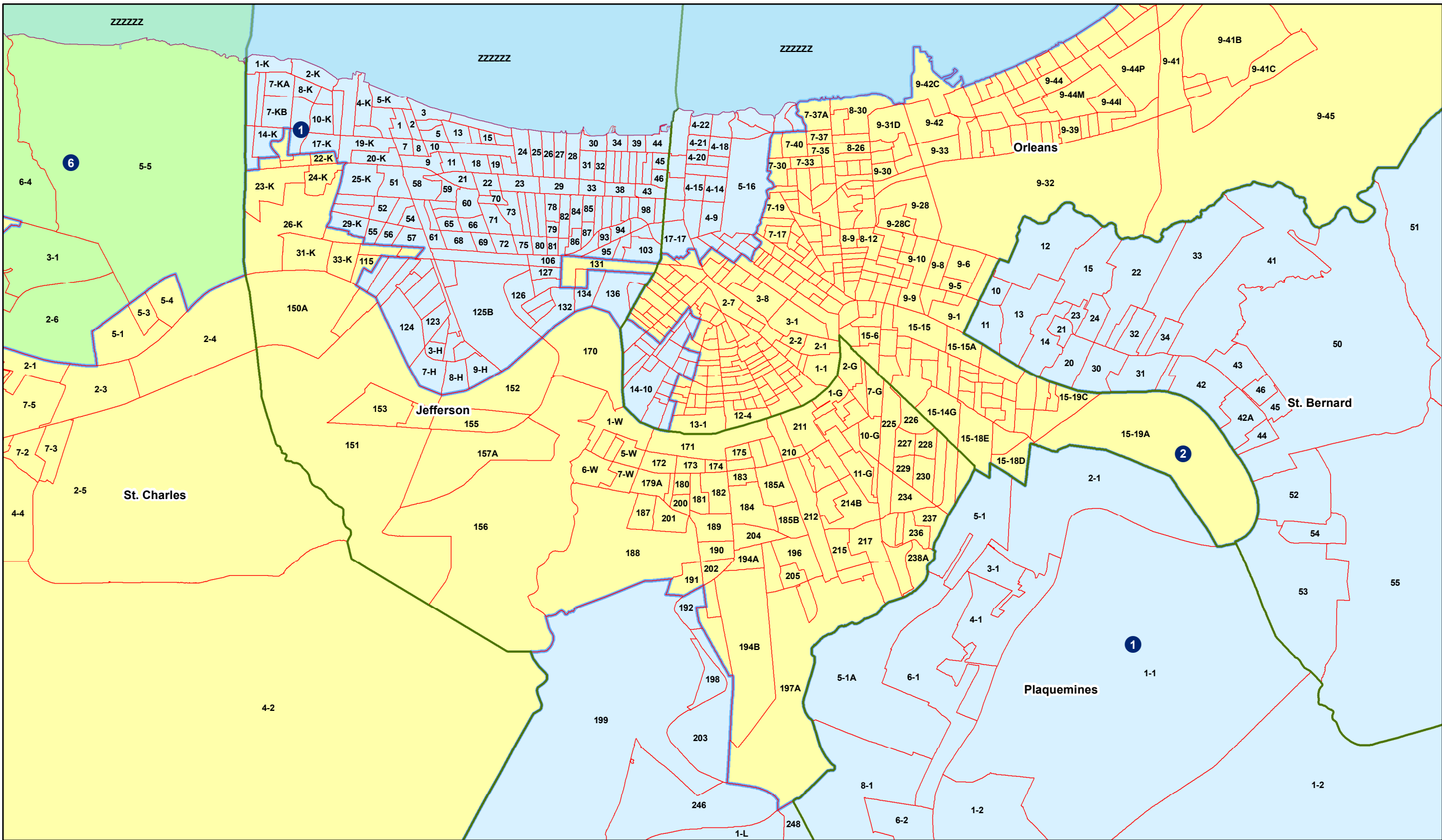
Congress - Livingston Tangipahoa - HCA SB121 - 5662



Congress - River Parishes - HCA SB121 - 5662



Congress - Greater New Orleans - HCA SB121 - 5662



Congress - Lafourche Terrebonne - HCA SB121 - 5662

